

# NL717

NEXTO LOGGER

Datalogger IIoT  
with LoRa

**altus**



**LoRa™**



# MARKETS

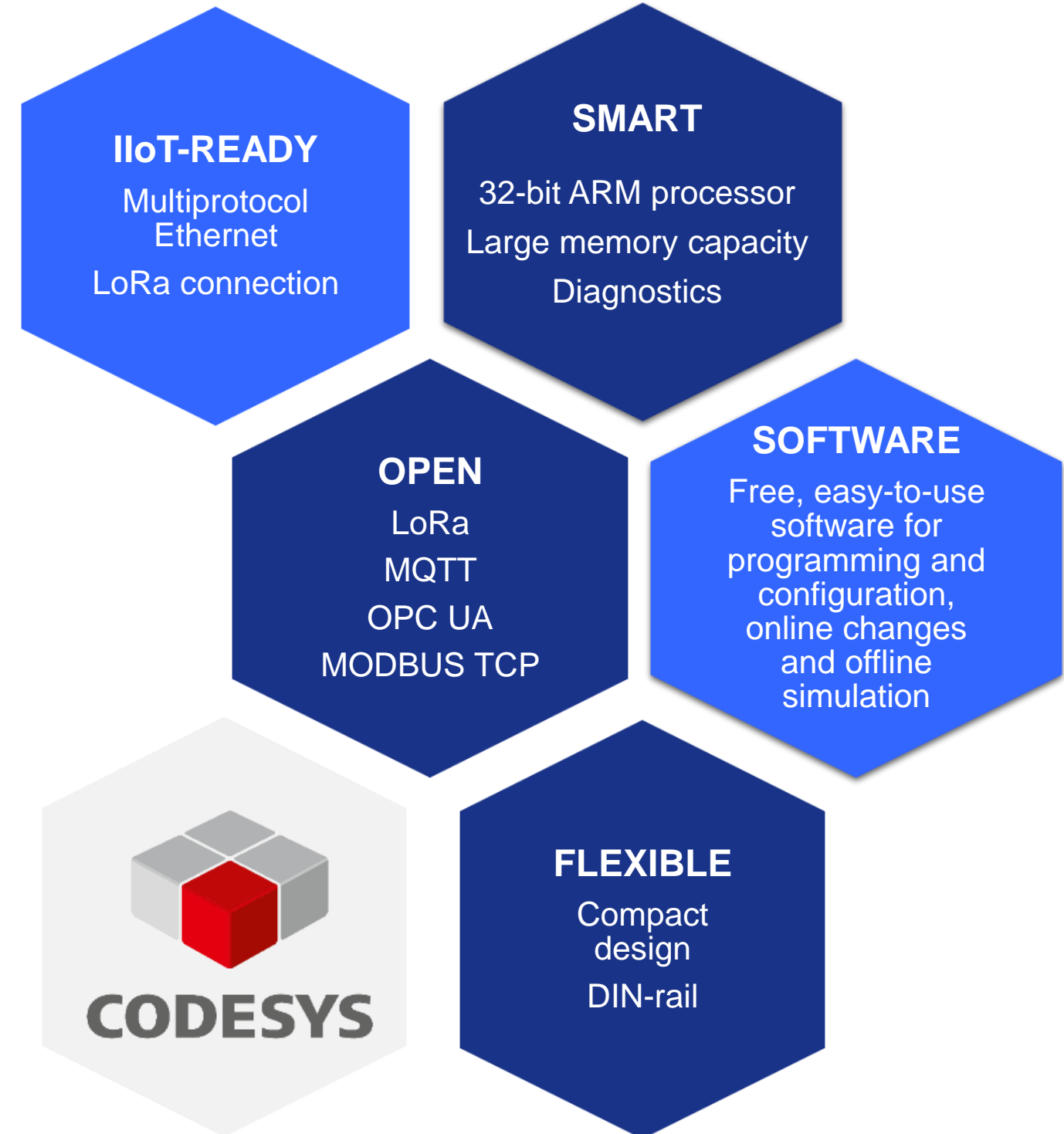
SOLUTIONS TO THE DEMANDS OF EVERY MARKET

WATER & WASTEWATER | INDUSTRY | AGROBUSINESS

FOOD & BEVERAGE | TRANSPORT | POWER

KEY SELLING POINTS

# PRODUCT HIGHLIGHTS

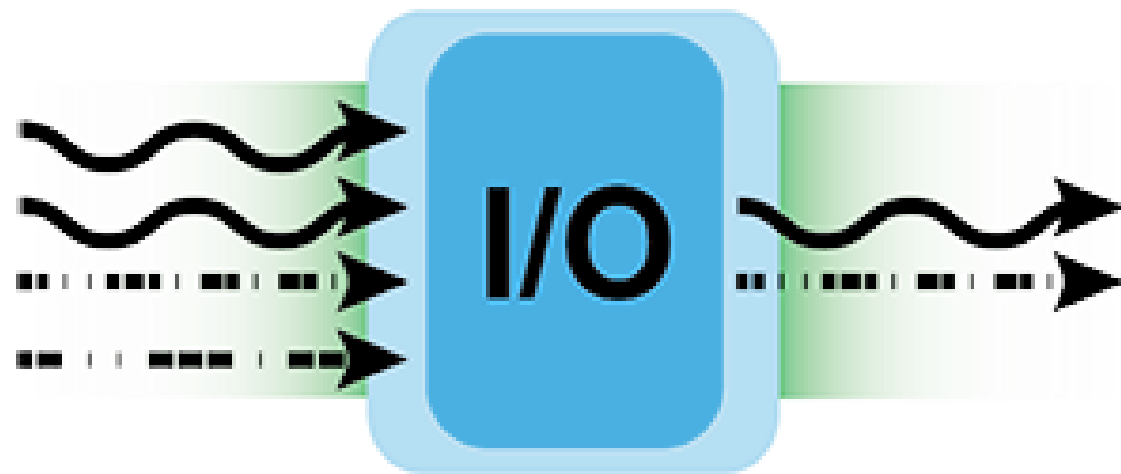


## PRODUCT HIGHLIGHTS



- DIN rail mount
- Compact design
- 10-30 Vdc power supply input
- High-speed 32-bit ARM-based processor
- LoRaWan radio (SMA connector)
- Embedded digital and analog inputs
- LEDs for diagnostics
- Extractable terminal blocks
- Real-time clock (RTC)
- SDI-12 interface

## PRODUCT HIGHLIGHTS



### DIGITAL INPUTS

- 8 inputs (24 Vdc)
- Optoisolated (sink)
- High-speed counters and external interruption (4 fast inputs)

### ANALOG INPUTS

- 8 inputs
- 16-bit resolution
- Current: 0 to 20 mA, 4 to 20 mA

## PRODUCT HIGHLIGHTS



### **ETHERNET (1x)**

- MODBUS TCP Client/Server
- OPC UA
- MQTT (TLS 1.2)
- Programming and configuration

### **SDI-12 (1x)**

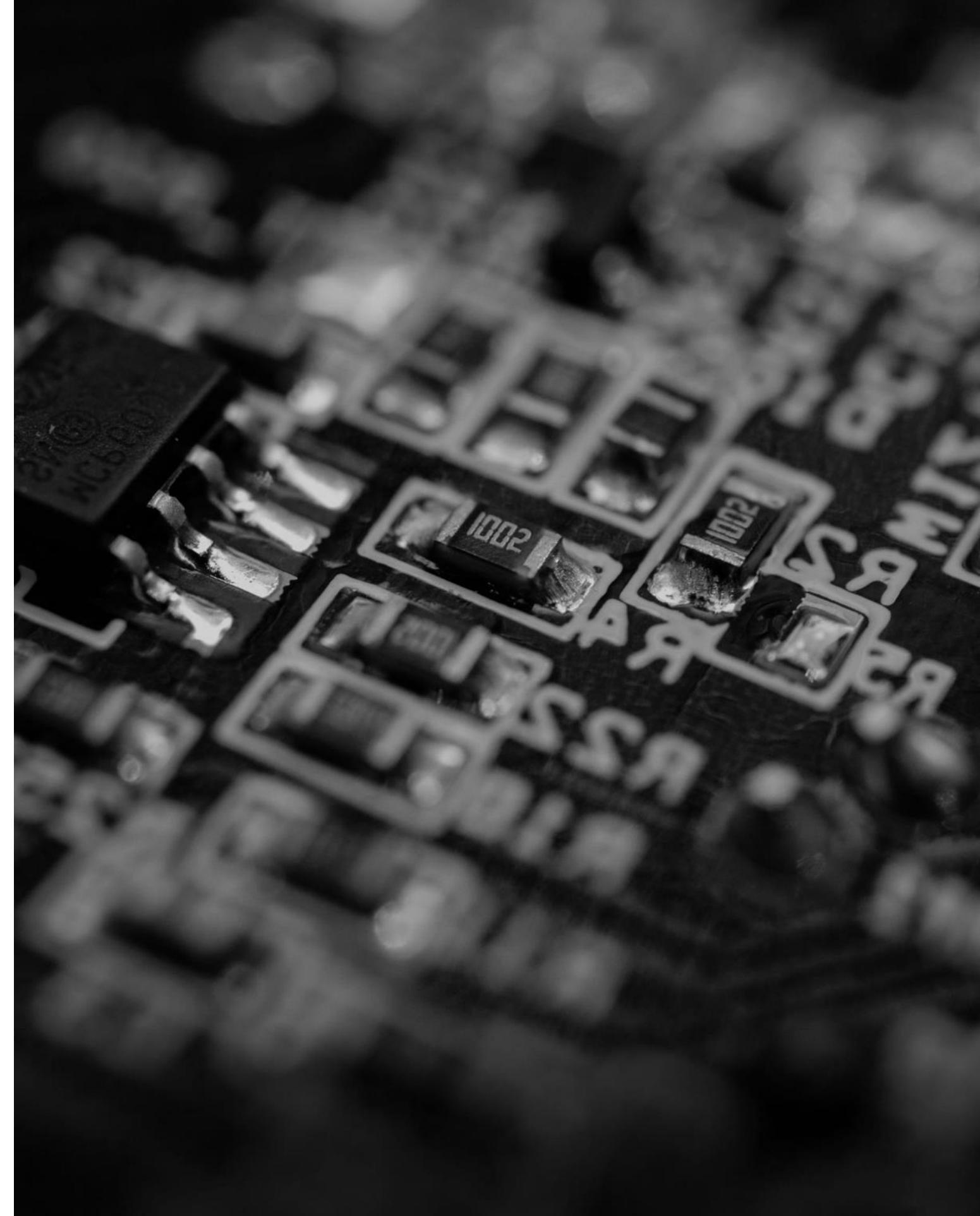
### **RADIO (1x)**

- LoRaWan
- 915-928MHz frequency
- SMA connector

## PRODUCT HIGHLIGHTS

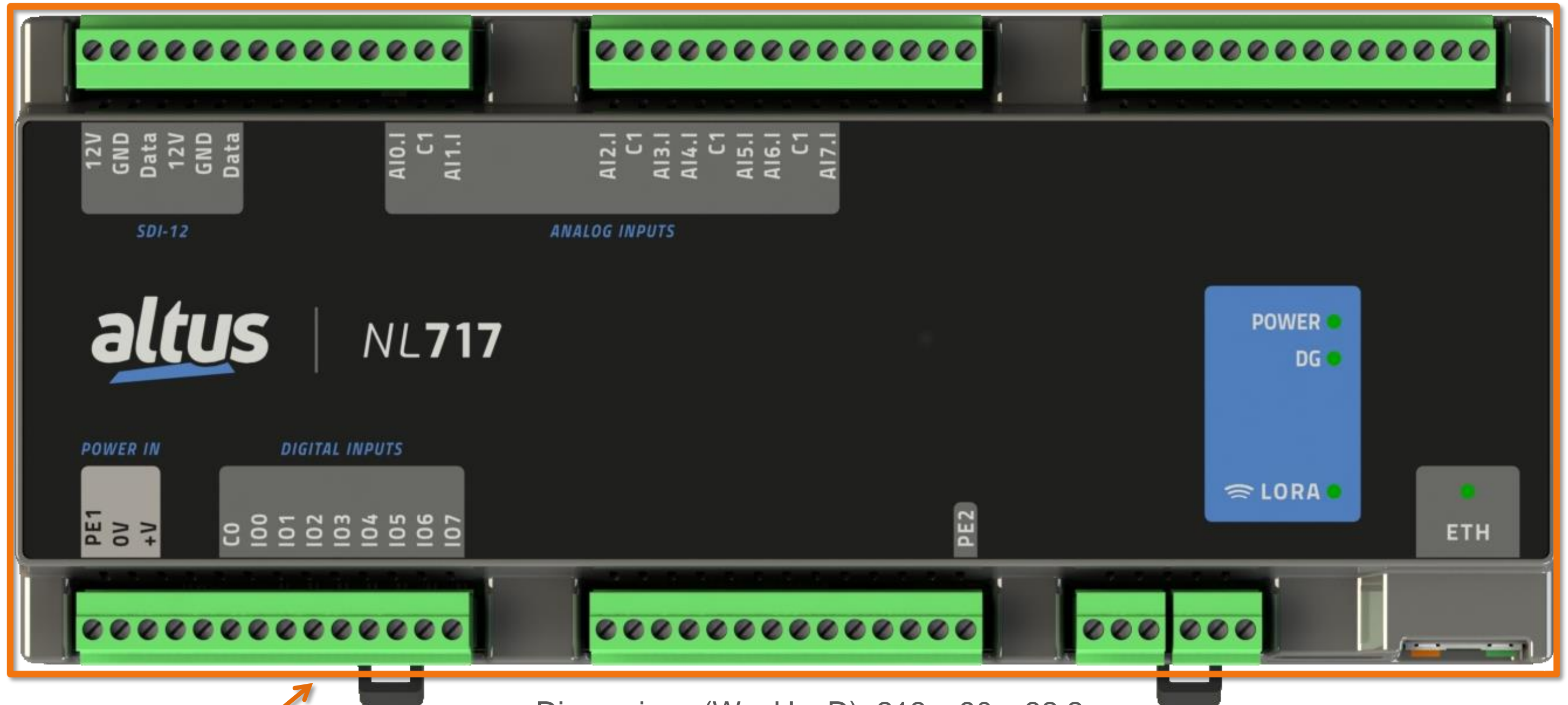
### PROTECTION AGAINST HAZARDOUS SUBSTANCES IN INDUSTRIAL ENVIRONMENTS

- Many industrial environments have hazardous substances on the air for printed circuit boards such as chemical components, air and moisture.
- In the conformal coating process a thin layer of nonconductive material is applied to protect against corrosion, extreme temperatures, sea air, humidity, among others.



HOUSING

# PRODUCT HIGHLIGHTS



Dimensions (W x H x D): 213 x 90 x 32.2 mm

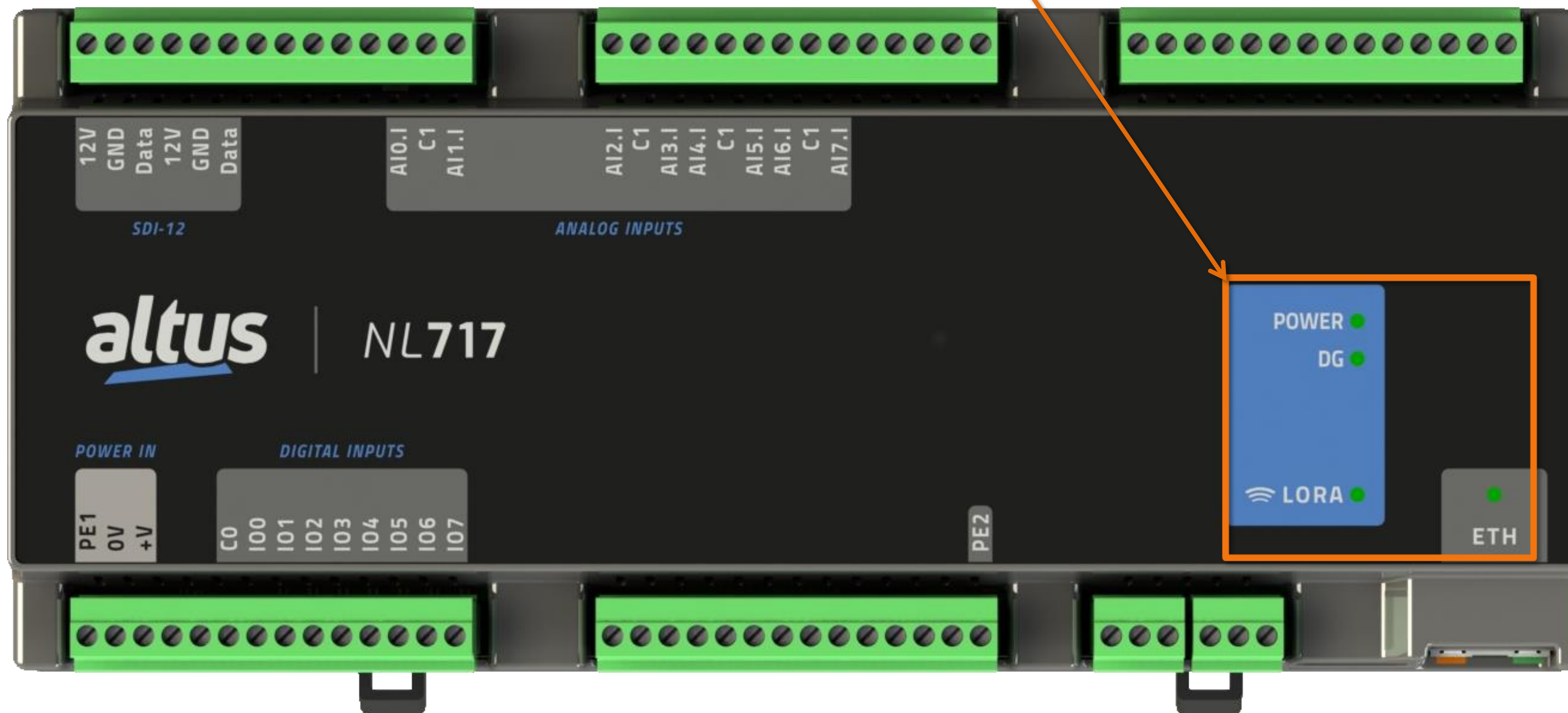
PRODUCT HOUSING



HOUSING

# PRODUCT HIGHLIGHTS

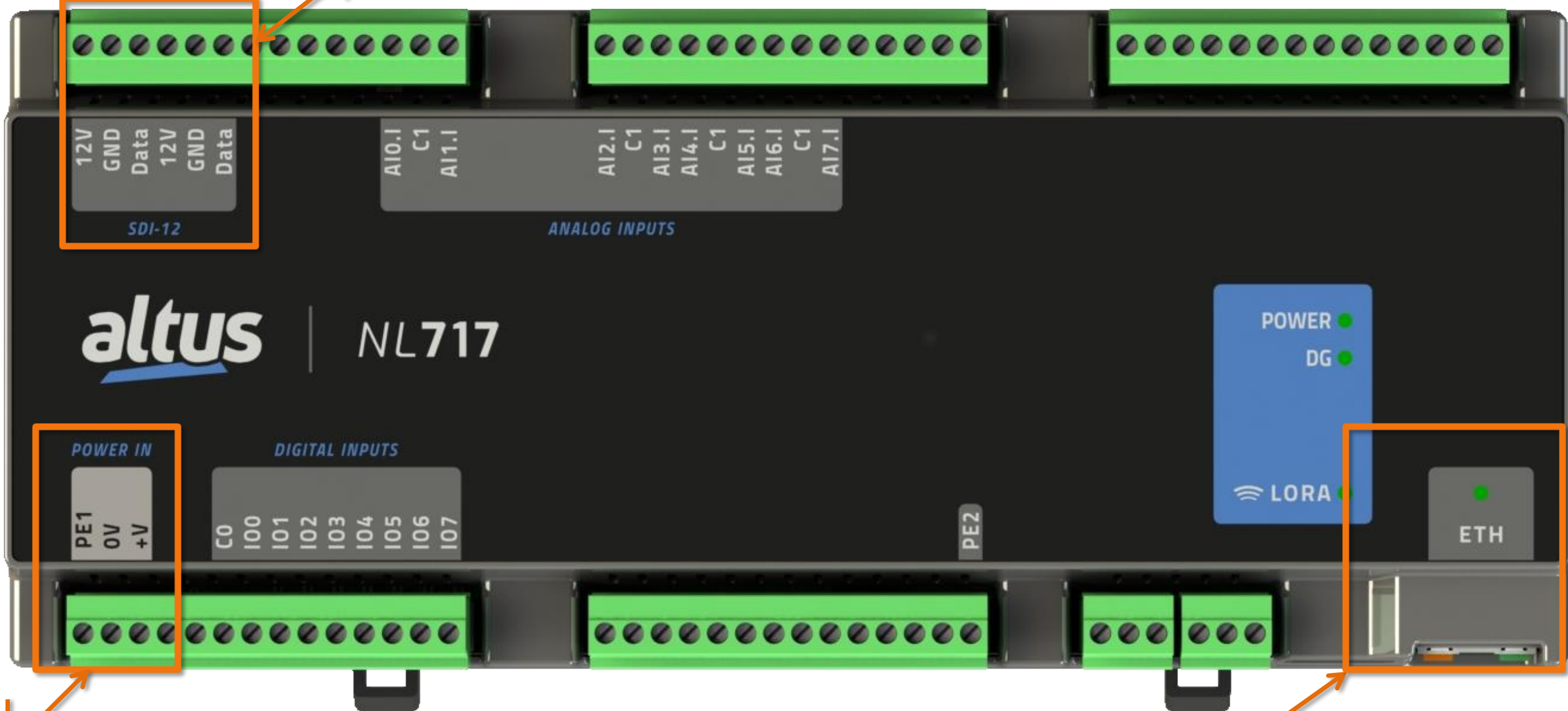
DIAGNOSTICS



HOUSING

# PRODUCT HIGHLIGHTS

COMMUNICATION PORT

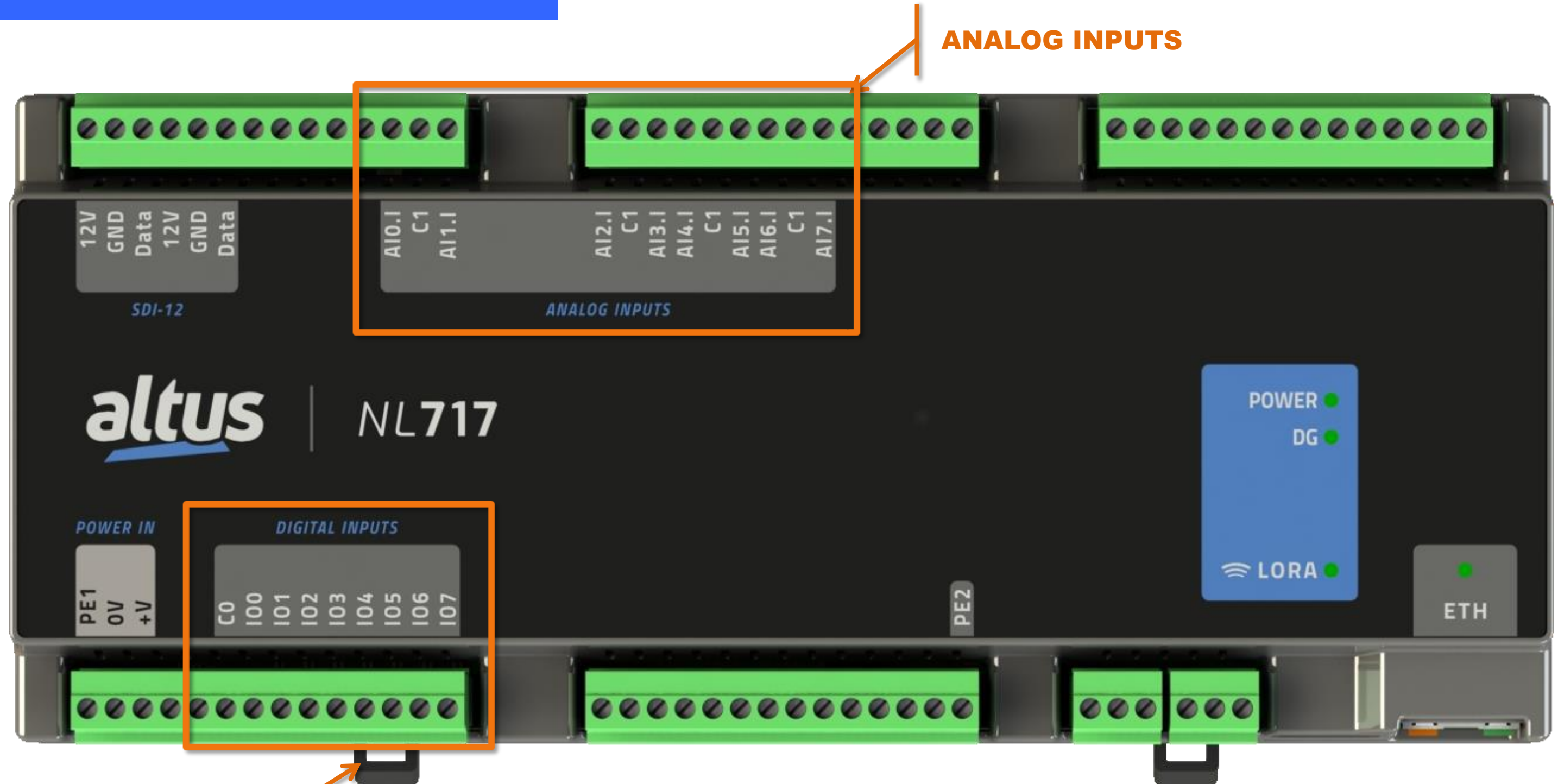


POWER SUPPLY INPUT

COMMUNICATION PORT

HOUSING

# PRODUCT HIGHLIGHTS



ANALOG INPUTS

DIGITAL INPUTS

## PRODUCT HIGHLIGHTS



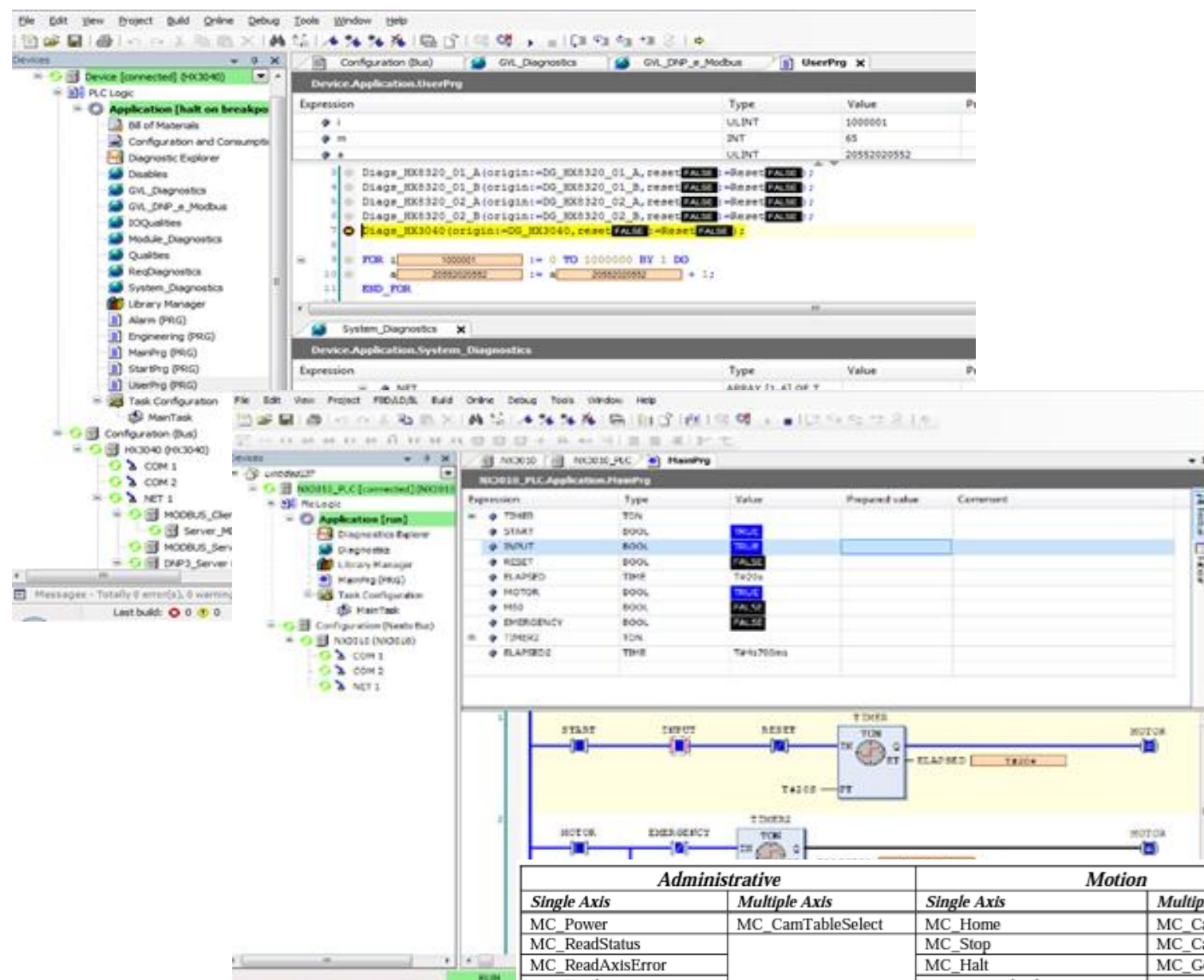
### MASTERTOOL IEC XE

- One easy-to-use software environment for all your automation needs
- Friendly user interface and easy to use
- Single control platform with modern programming environment
- 6 programming languages
- Online programming
- NL717 available in v3.51 or superior

# PRODUCT HIGHLIGHTS

## ENGINEERING AND BACKUP FEATURES

- Online debugging and monitoring
- Online changes
- Offline simulation
- Symbolic variables
- Easy hardware configuration
- System diagnostics
- Global variable lists
- Source code memory area

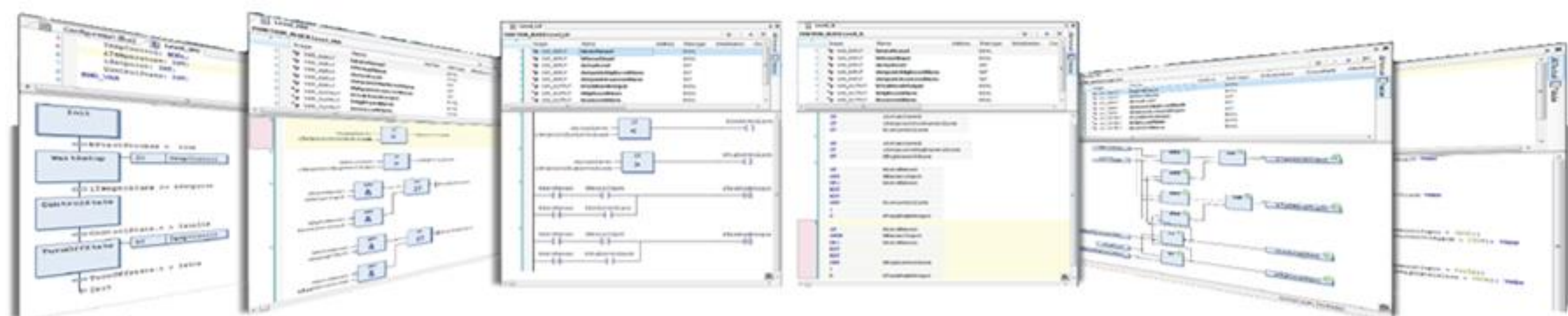


Administrative		Motion	
Single Axis	Multiple Axis	Single Axis	Multiple Axis
MC_Power	MC_CamTableSelect	MC_Home	MC_CamIn
MC_ReadStatus		MC_Stop	MC_CamOut
MC_ReadAxisError		MC_Halt	MC_GearIn
MC_ReadParameter		MC_MoveAbsolute	MC_GearOut
MC_ReadBoolParameter		MC_MoveRelative	MC_GearInPos
MC_WriteParameter		MC_MoveAdditive	MC_PhasingAbsolute
MC_WriteBoolParameter		MC_MoveSuperimposed	MC_PhasingRelative
MC_ReadDigitalInput		MC_MoveVelocity	MC_CombineAxis
MC_ReadDigitalOutput		MC_MoveContinuousAbsolute	
MC_WriteDigitalOutput		MC_MoveContinuousRelative	
MC_ReadActualPosition		MC_TorqueControl	
MC_ReadActualVelocity		MC_PositionProfile	
MC_ReadActualTorque		MC_VelocityProfile	
MC_ReadAxisInfo		MC_AccelerationProfile	
MC_ReadMotionState			
MC_SetPosition			
MC_SetOverride			
MC_TouchProbe			
MC_DigitalCamSwitch			
MC_Reset			
MC_AbortTrigger			
MC_HaltSuperimposed			

# PRODUCT HIGHLIGHTS

## IEC 61131-3 – PROGRAMMING LANGUAGES

- Structured Text (ST)
- Sequential Function Chart (SFC)
- Function Block Diagram (FBD)
- Ladder Diagram (LD)
- Instruction List (IL)
- Continuous Function Chart (CFC)
- Support of different languages in the same project



## PRODUCT HIGHLIGHTS

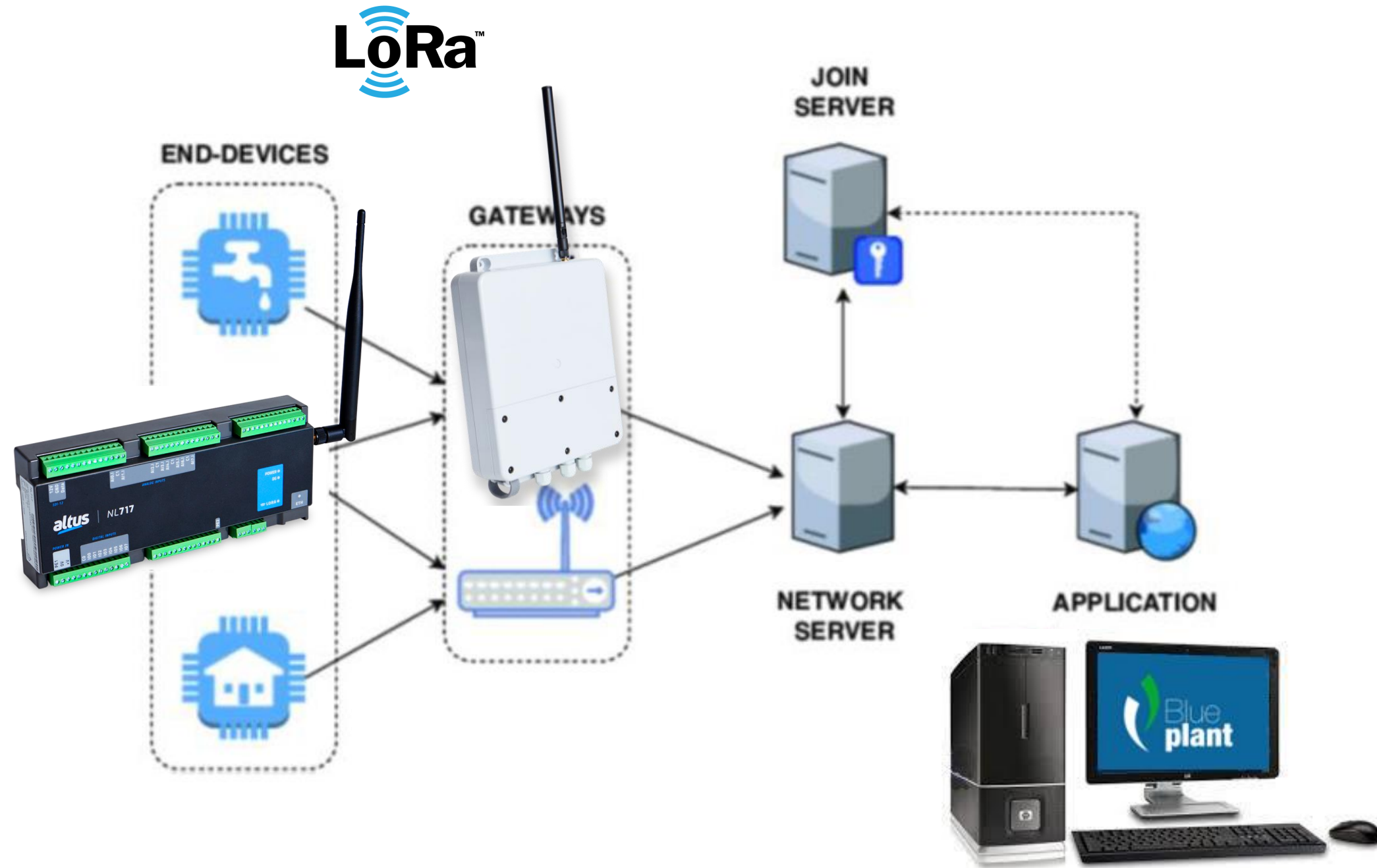
### GW700

- LoRaWan communication
- 915-928MHz
- Network security using encryption
- Efficient message publishing algorithm (low power devices)
- Ethernet interface
- IP65 enclosure
- Removable antenna (2dBi)
- Configuration and monitoring via integrated web server
- 10-30 Vdc power supply input
- Real Time Clock (RTC)



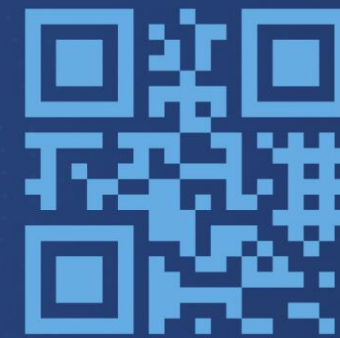
# PRODUCT HIGHLIGHTS

- Telemetry
- Hydrology
- Industrial data acquisition
- Energy data acquisition (Solar Plant)
- Monitoring of water treatment plants
- Reservoir level control





 altus-automation  /altussa



KNOW MORE ABOUT  
OUR PRODUCTS  
AND SOLUTIONS  
[www.altusind.com](http://www.altusind.com)

**altus**

The information stated in this material are property of Altus Sistemas de Automação S.A. and could be changed with no early notice. Merely illustrative images